

BETEC R-800.5

Very fast setting grout with high early strength

Technical Data Sheet No. 3.20 RV0

Product description

BETEC® R-800.5 is a custom engineered high performance grout with very fast setting properties for manhole restoration and fixations in traffic zones, where a very fast initial strength development is required to allow fast reinstatement of the road.

Advantages

- Ultra fast setting and very fast initial strength development of $\approx 5\text{MPa}$ after 30 minutes, allowing fast reinstatement of the road for traffic.
- Flowable consistency for easy, fast and cost-effective installation by pouring.
- Self compacting and volume stable.

Field of Application

BETEC® R-800.5 is specifically engineered for:

- Manhole elevation and leveling.
- Fixation and re-bedding of manhole frames.
- Fixation of curbs, poles and other elements in traffic zones.
- Underfilling of voids.

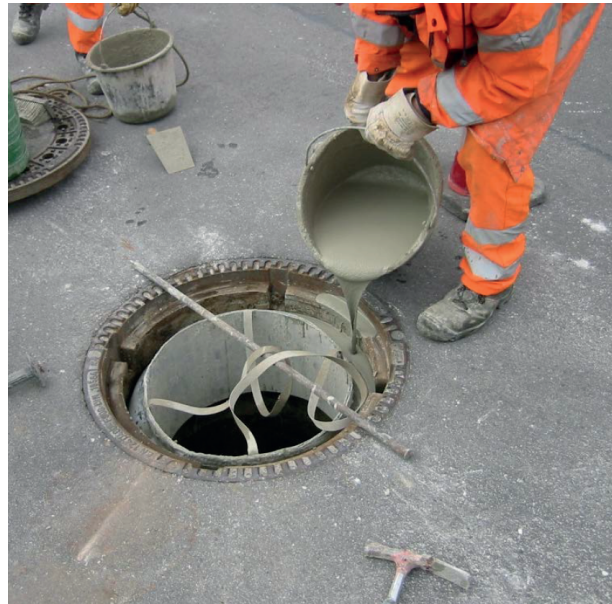
Application

1. Preparation of Substrate

- Substrate preparation has to be according EN 1504-10 part 7.
- The substrate has to be free from dirt, grease, laitance, loose concrete, loose particles or layers which could adversely affect adhesion.
- Remove all damaged concrete and prepare substrate by sand or grid blasting, high pressure water jetting, or other methods until base concrete is exposed, offering sufficient roughness (bond) and open pores.
- The substrate must be pre-wetted with clean water until saturated. The substrate should be damp, but without free standing water.
- The substrate must be frost-free and have a cohesion of minimum 1.5 N/mm^2 .

2. Mixing

- The product has to be mixed using a suitable forced action mixer (400-600rpm). The mixing head must be completely immersed in the powder.
- Add 4/5 of the required quantity of water into the mixer and mix for 2 minutes. Add the remaining quantity of water. The water content can be varied to obtain the desired consistency. Never use more than the maximum water quantity. Mix for an additional 2 minutes until a lump-free, homogeneous mixture is obtained.
- The mixing time depends on the type of mixer. 4 minutes is the minimum.
- The mixture must be allowed to rest to release air entrapped during mixing.
- Once the grout is ready mixed, apply immediately. Do not prepare more material than can be used within the open time of the material.



- When the grout starts to set, remix but never add more water.

3. Application

- The material is always poured or pumped from one side or corner in one continuous application. A dense and non-absorbent formwork is necessary. To prevent air entrapment, sufficient ventilation holes must be provided.
- Do not vibrate.
- When grouting large areas, apply the grout by using worm/screw pumps.

4. Curing

- After treatment has to be according EN 13610 in combination with DIN EN 1045-3.
- In warm or windy conditions protect the applied material from dehydration by mist-spraying with clean water or protective tarpaulins until the initial set has taken place.
- In cold conditions cover with insulated tarpaulin, polystyrene or other insulating material. Protect surfaces against frost and rain until final set has taken place.
- In cold, humid or unventilated areas it can be necessary to allow for a longer curing period, or to introduce forced air movement to avoid condensation. Never use dehumidifiers during the curing period or within 28 days after application.
- Formwork should not be removed for at least 2 hours.
- The after-treatment should be at least 5 days, or until the material is covered and protected, eg. with asphalt.
- The after-treatment should take place as soon as possible, at the latest when the material surface starts to set.
- As an alternative to the conventional treatment methods, suitable curing agents can be used to prevent rapid water loss.

--> *continued page 3*

BETEC R-800.5

Very fast setting grout with high early strength

Technical Data Sheet No. 3.20 RV0

Technical Data / Properties

		BETEC® R-800.5
Properties	Unit	Value*
Grain size	[mm]	0-1
Consistency	[-]	Flowable
Maximum water quantity	[l /25 kg]	3.8
Open time	[min]	≈ 5
Application temperature (Powder, water and environment)	[°C]	+5 to +30
Fresh mortar density	[kg/dm³]	≈ 2.2
Yield (25kg bags)	[dm³]	≈ 13
Calculation quantity	[kg/m³]	1920
Strength development	[-]	Fast
Compressive strength (**) - 0,5 hour - 1 hour - 2 hours - 24 hours - 7 days - 28 days	[N/mm²]	≈ 5 ≈ 7.5 ≈ 10 ≈ 15 ≈ 30 ≈ 40
Strength class	[-]	C 35/45
Exposure classes (***)	[-]	X0, XC1-XC4, XD1-XD3, XS1-XS3, XA1-XA2, XF1-XF3
Moisture classes (***)	[-]	WO, WF, WA
Shelf life	6 Months Stored under cover, clear of the ground, protected from all sources of moisture and frost.	
Packaging	Bags of 25 kg with plastic liner. 40 bags per pallet (1000kg)	
Appearance	Grey	

(*) Typical values in production control. All tests were executed under a conditioned temperature of 21°C and 65% RH.

(**) Compressive strengths measurements based on prisms of 4x4x16cm.

(***) According to EN 206-1:2001 in combination with DIN 1045-2.

BETEC R-800.5

Very fast setting grout with high early strength

Technical Data Sheet No. 3.20 RV0

5. *Cleaning and maintenance*

- Mixing and application equipment should be cleaned immediately with clean water. Hardened material needs to be removed mechanically.

6. *Special remarks*

- Cementitious materials can lead to incompatibilities under certain conditions in combination with non-ferrous metals (such as aluminium, copper, zinc).
- Low temperatures reduce flow and delay the early strength development. High temperatures accelerate the strength development and decrease the open time of the material.
- Depending on geometry and application thickness, reinforcement steel can be necessary.
- Lateral grouting overhang should be kept as low as possible (approx. 20-50mm).

Health & Safety

BETEC® R-800.5 is a product based on cement and can therefore cause burns to skin and eyes, which should be protected during use. Wear gloves and protective eye shields. Wearing a dust mask is advised. Treat splashes to eyes and skin immediately with clean water. Consult a doctor when irritation continues. If accidentally ingested, drink water and consult a doctor. Users must comply with all risk and safety phrases. MSDS's can be obtained from GCP Applied Technologies or from our website. GISCODE ZP1

Legal Notes

The information, and, in particular, the recommendations relating to the application and end-use of our products, are given in good faith based on our current knowledge and experience of the products when properly stored, handled and applied under normal conditions in accordance with our recommendations. In practice, the differences in materials, substrates and actual site conditions are such that no warranty in respect of merchantability or of fitness for a particular purpose, nor any liability arising out of any legal relationship whatsoever, can be inferred either from this information, or from any written recommendations, or from any other advice offered. The user of the product must test the product's suitability for the intended application and purpose. Valcke Bouwspecialiteiten B.V.B.A. reserves the right to change the properties of its products. The proprietary rights of third parties must be observed. All orders are accepted subject to our current terms of sale and delivery. Users must always refer to the most recent issue of the local Product Data Sheet for the product concerned, copies of which will be supplied on request.